

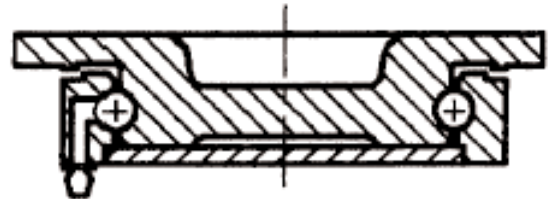
# 95-96 SERIES HEAVY DUTY KINGPINLESS CASTERS



## STANDARD FEATURES:

- Kingpinless caster design - no swivel kingpin to bend or break. Better than standard casters at withstanding shock and impact. Last longer, saves money.
- Based on original superior patented design.
- Drop forged upper and lower cup.
- Hardened swivel raceway. Corrosion-resistant zinc plated finish.
- 3/4" wheel axle & nut.
- Leg thickness: 23/64"
- Double-welded legs, 3-1/2" fork spacing.
- Larger top plate provides stability.
- Zerk fittings in wheel and swivel race.
- Optional brake and swivel lock available.

TOP PLATE SIZE AND BOLT HOLE SPECIFICATIONS		
TOP PLATE SIZE	BOLT HOLE CENTERS	ATTACHING BOLT SIZE
5 9/32 x 7 1/4	3 3/8 x 5 1/4 to 4 1/8 x 6 1/8	3/8



Series 95-96 casters are made from forged steel. Top plate and inner raceway are forged from one piece, providing a superior raceway construction for shock conditions. This forged design outperforms the standard steel plate welded to tubular steel inner races, especially in abusive and impact-loading conditions.

WHEEL DIAMETER	WHEEL WIDTH	WHEEL COMPOSITION	BEARING TYPE	LOAD CAPACITY	LOAD HEIGHT	SWIVEL RADIUS	PART NUMBER	
							SWIVEL	RIGID
6	3	Cast Iron	Roller	2000	7 11/16	5 3/32	695-03R	696-03R
		Mold-on Poly/Cast Iron		2000			695-10R	696-10R
		Phenolic		2000			695-05R	696-05R
		Mold-on Rubber		700			695-08R	696-08R
8	3	Cast Iron	Roller	2500	10 5/16	6 5/32	895-03R	896-03R
		Mold-on Poly/Cast Iron		2500			895-10R	896-10R
		Phenolic		2500			895-05R	896-05R
		Mold-on Rubber		800			895-08R	896-08R
10	3	Cast Iron	Roller	2700	12 1/16	7 9/16	1095-03R	1096-03R
		Mold-on Poly/Cast Iron		3000			1095-10R	1096-10R
		Phenolic		2700			1095-05R	1096-05R
		Mold-on Rubber		1000			1095-08R	1096-08R
12	3	Cast Iron	Roller	3000	14 3/32	8 9/16	1295-03R	1296-03R
		Mold-on Poly/Cast Iron		3200			1295-10R	1296-10R
		Phenolic		3000			1295-05R	1296-05R
		Mold-on Rubber		1140			1295-08R	1296-08R