

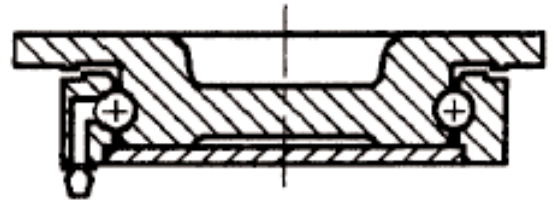
# 93-94 SERIES HEAVY DUTY KINGPINLESS CASTERS



## STANDARD FEATURES:

- Kingpinless caster design - no swivel kingpin to bend or break. Better than standard casters at withstanding shock and impact. Last longer, saves money.
- Based on original superior patented design.
- Drop forged upper and lower cup.
- Hardened swivel raceway. Corrosion-resistant zinc plated finish.
- 3/4" wheel axle & nut
- Leg thickness: 23/64"
- Double-welded legs, 3-1/2" fork spacing
- Larger top plate provides stability
- Zerk fittings in wheel and swivel race
- Optional brake and swivel lock available

TOP PLATE SIZE AND BOLT HOLE SPECIFICATIONS		
TOP PLATE SIZE	BOLT HOLE CENTERS	ATTACHING BOLT SIZE
5 9/32" x 7 1/4"	3 3/8" x 5 1/4" to 4 1/8" x 6 1/8"	3/8"



Series 93-94 casters are made from forged steel. Top plate and inner raceway are forged from one piece, providing a superior raceway construction for shock conditions. This forged design outperforms the standard steel plate welded to tubular steel inner races, especially in abusive and impact-loading conditions

WHEEL DIAMETER	WHEEL WIDTH	WHEEL COMPOSITION	BEARING TYPE	LOAD CAPACITY	LOAD HEIGHT	SWIVEL RADIUS	PART NUMBER	
							SWIVEL	RIGID
6	2 1/2"	Cast Iron	Roller	1600	7 11/16	5 5/32	693-03R	694-03R
		Mold-on Poly/Cast Iron		1600			693-10R	694-10R
		Phenolic		1600			693-05R	694-05R
		Mold-on Rubber		550			693-08R	694-08R
8	2 1/2"	Cast Iron	Roller	2000	10 5/16	6 5/32	893-03R	894-03R
		Mold-on Poly/Cast Iron		1900			893-10R	894-10R
		Phenolic		2000			893-05R	894-05R
		Mold-on Rubber		700			893-08R	894-08R
10	2 1/2"	Cast Iron	Roller	2200	12 1/16	7 9/16	1093-03R	1094-03R
		Mold-on Poly/Cast Iron		2300			1093-10R	1094-10R
		Phenolic		2200			1093-05R	1094-05R
		Mold-on Rubber		800			1093-08R	1094-08R
12	2 1/2"	Cast Iron	Roller	2500	14 3/32	8 9/16	1293-03R	1294-03R
		Mold-on Poly/Cast Iron		2500			1293-10R	1294-10R
		Phenolic		2500			1293-05R	1294-05R
		Mold-on Rubber		900			1293-08R	1294-08R