

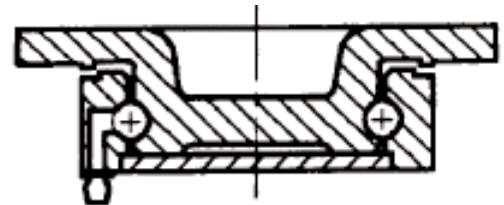
90-91

SERIES HEAVY DUTY KINGPINLESS CASTERS



STANDARD FEATURES:

- Swivel load bearing – this unique design forged swivel section with 3/8" dia. carbon steel balls in a 2 3/8" dia. raceway accommodates both thrust and load forces because of its kingpinless design; the swivel raceway is precision machined and induction hardened
- Finish – Bright zinc plating
- Top plate and fork base are hot forged steel that has been induction hardened to ensure uniform depth of hardness in the swivel races
- Fork legs are 1/4" thick, 2" wide formed steel, with inside and outside welds for extra strength
- Wheel axle – 1/2" dia. axle, with lock nut
- Fork leg spacing - 2 1/2" width
- Sealing cap welded to outer race assures protection from foreign material and keeps grease in the race area



TOP PLATE SIZE AND BOLT HOLE SPECIFICATIONS

TOP PLATE SIZE	BOLT HOLE CENTERS	ATTACHING BOLT SIZE
4 x 4 1/2	2 5/8 x 3 5/8 Slotted to 3 x 3	3/8

Series 90-91 casters are made from forged steel. Top plate and inner raceway are forged from one piece, providing a superior raceway construction for shock conditions. This forged design outperforms the standard steel plate welded to tubular steel inner races, especially in abusive and impact-loading conditions

WHEEL DIAMETER	WHEEL WIDTH	WHEEL COMPOSITION	BEARING TYPE	LOAD CAPACITY	LOAD HEIGHT	SWIVEL RADIUS	PART NUMBER	
							SWIVEL	RIGID
4	2	Rubber / Cast Iron	Roller	400	5-5/8	3-13/16	490-08R	491-08R
		Cast Iron		800			490-03R	491-03R
		Mold-on Poly/Cast Iron		800			490-10R	491-10R
		Phenolic		800			490-05R	491-05R
		Gray Rubber		350			490-25R	491-25R
		Heavy Duty Plastic		500			490-07R	491-07R
		Solid Polyurethane		1000			490-14R	491-14R
5	2	Rubber / Cast Iron	Roller	450	6-1/2	3 7/8	590-08R	591-08R
		Cast Iron		1000			590-03R	591-03R
		Mold-on Poly/Cast Iron		1000			590-10R	591-10R
		Phenolic		1000			590-05R	591-05R
		Gray Rubber		400			590-25R	591-25R
		Heavy Duty Plastic		650			590-07R	591-07R
		Solid Polyurethane		1000			590-14R	591-14R
6	2	Rubber / Cast Iron	Roller	550	7 1/2	4 9/16	690-08R	691-08R
		Cast Iron		1200			690-03R	691-03R
		Mold-on Poly/Cast Iron		1200			690-10R	691-10R
		Phenolic		1200			690-05R	691-05R
		Gray Rubber		500			690-25R	691-25R
		Heavy Duty Plastic		700			690-07R	691-07R
		Solid Polyurethane		1200			690-14R	691-14R
8	2	Rubber / Cast Iron	Roller	600	9 1/2	6	890-08R	891-08R
		Cast Iron		1400			890-03R	891-03R
		Mold-on Poly/Cast Iron		1200			890-10R	891-10R
		Phenolic		1400			890-05R	891-05R
		Gray Rubber		600			890-25R	891-25R
		Heavy Duty Plastic		850			890-07R	891-07R
		Solid Polyurethane		1200			890-14R	891-14R